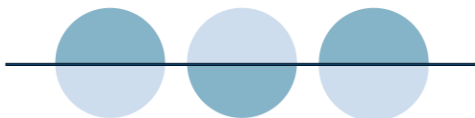


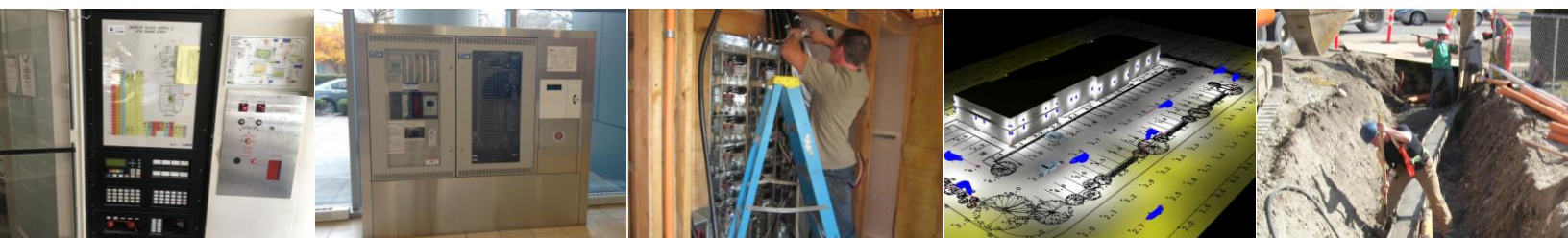


PVE

ENGINEERING LTD.



ELECTRICAL CONSULTING SERVICES COMPANY BROCHURE





COMPANY PROFILE



PVE Engineering Ltd. has been providing electrical consulting services to the BC construction industry for nearly 20 years.

We specialize in electrical design for residential and commercial buildings, offering specialty design services for fire alarm system upgrades, elevator modernizations, BC Hydro coordination, and EV charging infrastructure.

Working closely with owners, developers, architects and trades, we ensure that designs are functional, energy efficient, aesthetic, and within budget.

OUR SERVICES

BASIC BUILDING SERVICES	SPECIALTY DESIGN SERVICES
Residential Commercial Multiplex	
Electrical Design Permit Drawings	Lighting IT Security
Code & Cost Consulting	Fire Alarms BC Hydro Coordination
Contract Administration	Electrical Planning & EV Ready Reports

THE TEAM

Stephane Jacob, P.Eng

EGBC REGISTRATION: #27922



Having founded PVE Engineering in 2006, Stephane is the Engineer of Record for electrical projects designed by PVE. With over 25 years of experience in the building services industry, he is involved in and committed to the success of each project from start to finish.

Luc Jacob, EIT

EGBC REGISTRATION: #257477



Luc graduated from UBC Engineering in 2024. Having worked with PVE part-time while studying, Luc has experience as a technologist, designer, project manager, and project engineer (EIT).





ELECTRICAL DESIGN PROJECT HIGHLIGHTS

MULTIPLEX PROJECT HIGHLIGHTS



126 E 17th Ave Multiplex, Vancouver, BC
Client: Solaris Properties, Vancouver, BC

This project converted a single-family property into a multiplex property with 5 units, converting the front home into a triplex and adding a new duplex in the back. PVE coordinated with BC Hydro to determine the type of service required and designed the underground service for this project, which did not require an on-site PMT.



The Ross Residences Multiplex, Vancouver, BC
Client: Nofziger Construction, Vancouver, BC

This 2024 Georgie Award winning residential property converted a single-family dwelling into 3 duplexes on a single lot. Close coordination with BC Hydro and the City of Vancouver allowed for these buildings to be powered from a single overhead service with no PMT required on site.



4088 Maple Crescent Multiplex, Vancouver, BC
Client: Clear Water Development Group, Vancouver, BC

This new multiplex project converted a single-family property into a triplex front-building plus an infill unit. Through coordination with BC Hydro and the Electrical Contractors, the property was serviced with 2x200A overhead services to avoid requiring a PMT.





ELECTRICAL DESIGN PROJECT HIGHLIGHTS

RESIDENTIAL PROJECT HIGHLIGHTS



CONSTRUCTION VALUE: ~\$20M

Apple Valley Senior Residence, Kelowna, BC Client: New Town Architecture, Kelowna, BC

This 3-phase, 9-year BC Housing partnership multi-building new-construction project created 197 rental-assisted senior living suites with extensive main floor amenities and office spaces including a 6-lane bowling alley, a staged wellness centre, and interconnecting underground parking.



CONSTRUCTION VALUE: ~\$3M

Churchill Ave Apartments, Penticton, BC Client: CBA Architecture, Penticton, BC

This new-construction project created 20 apartments with 4 distinct unit types. PVE completed the electrical permit drawings, which included the floor and unit plan designs.



CONSTRUCTION VALUE: ~\$1M

Duke Townhomes, Vancouver, BC Client: Jawshstone Developments, Vancouver, BC

This townhome development on Duke Street in Vancouver created 8 units with an integrated fire alarm system. PVE completed the electrical permit drawings, which included the unit plan design and site lighting.





ELECTRICAL DESIGN PROJECT HIGHLIGHTS

COMMERCIAL PROJECT HIGHLIGHTS



RENOVATION VALUE: ~\$16M

312 Main Street, Vancouver, BC

Architect: Boni-Madison Architects, Vancouver, BC

This renovation project 're-animated' the 114,000 square foot vacated Vancouver Police Department Headquarters building into a shared community and leased co-working space in Vancouver's Downtown Eastside. PVE provided the electrical consulting for this multiple-partner project from conceptualization to occupancy.

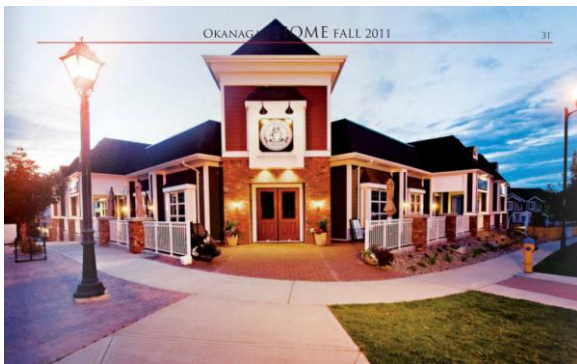


CONSTRUCTION VALUE: ~\$2M

Westside Landing – Parcel Development / CRU Building / TI

Architect: CBA Architecture, Penticton, BC

This multi-year set of projects coordinated the development of 9 acres of land into 10 subdivided and ready-for-service multi-family, office, and commercial retail lots. The first CRU base building (designed by PVE) allowed for seven commercial tenants, including an OK Tire tenant improvement (also designed by PVE).



CONSTRUCTION VALUE: ~\$1M

Kettle Valley Commercial Building, Kelowna, BC

Architect: New Town Architecture, Kelowna, BC

[Featured in OK Home Magazine – Fall 2011 Issue]

This quick-turnaround CRU base-building was designed with the versatility of allowing the service to any unit to be electrically upgraded to allow for high power demand tenants where required. This allowed for a wide range of tenancy options and 95% of units were leased shortly after building construction.





ELECTRICAL DESIGN PROJECT HIGHLIGHTS

FIRE ALARM SYSTEMS DESIGN & ELEVATOR MODERNIZATION HIGHLIGHTS



Spectrum Towers, Vancouver, BC

Client: Apex Elevator Consulting, Burnaby, BC

PVE provided the electrical engineering of this multi-tower interconnected FAS elevator modernization as well as the subsequent required FAS modernization. One tower is strata managed, the other run by a private management company.



PNE Coliseum, Vancouver, BC

Client: Fire Pro Fire Protection, Burnaby, BC

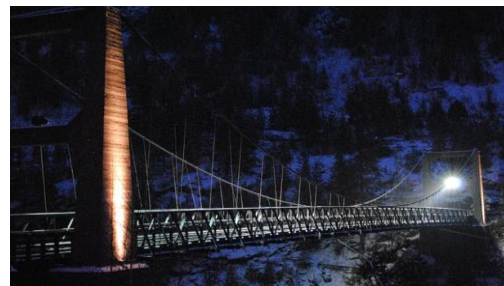
PVE performed the electrical engineering for the interconnection of the new NOVEX fire suppression systems with the existing fire alarm system. This was done for the renovation and fire-protection of the PNE Coliseum server room.

SPECIALTY LIGHTING & CONTROLS HIGHLIGHTS

Microsoft Visitor Centre, Redmond, WA



Brilliant Bridge, Castlegar, BC





ELECTRICAL DESIGN PROJECT HIGHLIGHTS

ELECTRICAL PLANNING REPORTS & LOAD CALCULATIONS EV CHARGER & EVEMS DESIGN HIGHLIGHTS

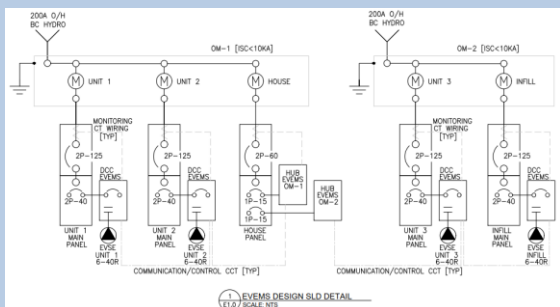
Existing strata corporations in Greater Vancouver must obtain an Electrical Planning Report on or before December 31, 2026.

- *Strata Property Act of British Columbia [Strata Property Regulation – Part 5.2 – Division 1(5.8)]*



Westerlies Strata Buildings, West Vancouver, BC
Client: Building Strata VAS475, West Vancouver, BC

In order to accommodate new EV chargers, PVE calculated the spare electrical load of this 2 high-rise building residential property. This allowed the strata to know how many new EV chargers they could install safely and if they required an EVEMS.



4088 Maple Crescent, Vancouver, BC
Client: Clear Water Development Group, Vancouver, BC

Having completed the BC Hydro coordination to service a multi-building multiplex via a Split-400A overhead service, PVE provided the Electric Vehicle Energy Management System (EVEMS) design enabling the site to be powered without requiring an on-site LPT/PMT transformer.

TESTIMONIAL

"I must say that it has been a real pleasure to work with you on these [BC Housing Partnership] projects. My experience in the past with other electrical engineers has not been pleasant. I have had a tough time getting questions answered or even complete drawings that make sense and work for the project and for the sub-trade.

You on the other hand seem very thorough with your design and being very available for questions and answers is so helpful for our projects. We really appreciate you and look forward to many more projects with you"

Ben Duckworth
Project Manager
Scuka Enterprises Ltd.

Please contact us at elec@pveengineering.com for your next project!

EGBC PTP#1003149



**ENGINEERS &
GEOSCIENTISTS**
BRITISH COLUMBIA

1M/1M Professional Liability Insurance
Provided by Metrix Professional
Insurance Brokers

Metrix
PROFESSIONAL INSURANCE BROKERS

